

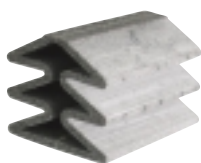
Herding®  
pure  
productivity

# DELTA and DELTA<sup>2</sup> FILTER ELEMENTS

## Herding® FILTERTECHNIK – THE FILTER ELEMENTS DELTA AND DELTA<sup>2</sup>

Facts make our DELTA-filter element series so special and convincing. Already today they meet the requirements of tomorrow's environmental technology. The body of the DELTA-filter element is formed by a sintered polyethylene PE-matrix. The filter surface is built by a micro-porous and hydrophobic PTFE-coating, which is firmly embedded into the pores of the PE-matrix.

**Clean gas chamber**  
optimized geometry  
resulting in reduced  
pressure drop



**DELTA**

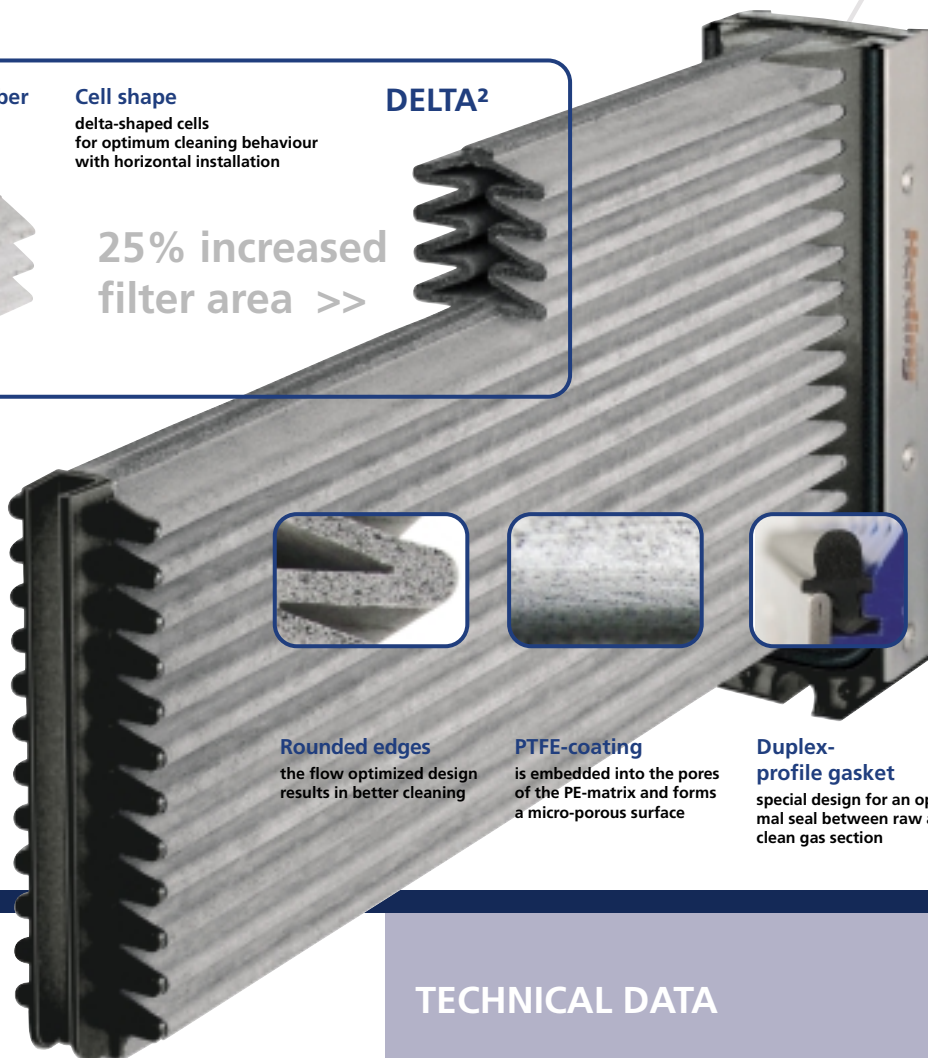
**Cell shape**  
delta-shaped cells  
for optimum cleaning behaviour  
with horizontal installation

**25% increased  
filter area >>**

**DELTA<sup>2</sup>**



**PE-head**  
to stabilize and fix the complete  
filter element



**Rounded edges**  
the flow optimized design  
results in better cleaning

**PTFE-coating**  
is embedded into the pores  
of the PE-matrix and forms  
a micro-porous surface

**Duplex-  
profile gasket**  
special design for an opti-  
mal seal between raw and  
clean gas section

### Facts about our DELTA-elements:

- filter element lifetime of up to 15 years possible
- low maintenance costs due to long useful life of the filter elements
- constant pressure drop guarantees consistent air flow
- high separation efficiency due to surface filtration
- clean gas emissions  $\leq 1.0 \text{ mg/m}^3$
- compact rigid body generates a robust filter design
- filter medium: capable to be washed, recycled and refurbished
- universal mounting from the raw- or clean gas side of the filter unit
- horizontal or vertical installation possible
- filter medium absolutely free of fibres, ideal for product recovery
- excellent use for highly abrasive dusts
- antistatic version of the filter elements available
- FDA-conformity by using food-grade filter material

### TECHNICAL DATA

The new DELTA<sup>2</sup> is an improvement over our DELTA-element. The filter area of the DELTA<sup>2</sup> has been increased by 25 % through adding more folds per chamber, but still remaining consistent with the original dimensions.

DELTA-filter element  
filter area per element: 1.82 m<sup>2</sup> to 3.75 m<sup>2</sup>

DELTA<sup>2</sup>-element  
filter area per element: 2.20 m<sup>2</sup> to 4.75 m<sup>2</sup>

Both DELTA-versions are available in the following lengths: 750 mm, 1200 mm, 1500 mm

The use of the DELTA or the DELTA<sup>2</sup> is determined by the process respectively by the process parameters.

Please feel free to contact us for technical assistance.